



300 Allston Street, Unit 401
Brighton, MA 02135 (USA)
www.jpe-services.com

Legacy systems & Migration Projects

Legacy systems & Migration Projects

Here is a list of the main projects executed by JPE SERVICES during the past few years. As per our confidentiality agreements with our clients, in this document are not provided details about the end-user/client name or location. If more details are needed, we will be able to evaluate your request on a case by case basis.

POWER PLANT (GAS/STEAM TURBINES AND BOP CONTROL SYSTEMS), SOUTHERN ITALY

Start Year:	2020
Location	Southern Italy
Industry	Energy
Technology	SIEMENS SPPA-T3000 (migration from Legacy ORSI AUTOMAZIONE systems)
Services	Engineering, Project documentation, Technical Support services



Engineering services focused on the architecture, logics, libraries and HMI analysis of the existing ORSI OpenPMC control system (with SIEMENS ET200M I/O modules, SIEMENS controls, third parties interfaces etc....) as well as ORSI CUBE/SIMATIC IT supervisory system and specific technical support on the reverse engineering phase of the migration project to SIEMENS SPPA-T3000.

PULP & PAPER PLANT (VARIOUS CONTROL SYSTEMS AND MOTION CONTROLS), NORTHERN ITALY

Start Year:	2019
Location	Northern Italy
Industry	Pulp & Paper
Technology	Legacy SIEMENS, GE, HONEYWELL, ROCKWELL, ABB-INFI90 control systems.
Services	Engineering, Maintenance, Technical Support services



Engineering, Maintenance and Technical support services focused to identify critical conditions for what concerns the maintenance aspects, product obsolescence (i.e. SIEMENS SIMADYN-D, SIMATIC S5, SIMOREG, SINAMICS, ROCKWELL PLC5, HONEYWELL MEASUREX, ABB/BAILEY INFI-90), support capability and migration scenarios. Site assessments & inspections.

**WASTE TREATMENT PLANT
(VARIOUS CONTROL SYSTEMS),
SOUTHERN ITALY**

Start Year:	2019 ... in progress
Location	Southern Italy
Industry	Waste Treatment
Technology	Legacy ORSI AUTOMAZIONE systems
Services	Engineering, Maintenance, Technical Support services



Engineering, Maintenance and Technical support services focused to establish a proper maintenance plan as well as a disaster & recovery procedure on the existing ORSI Series 20 system (with ORSI I/O modules, SIEMENS ET200M, SIEMENS PLCs) as well as the related ORSI CUBE supervisory system. Periodic inspections and maintenance activities.

**WASTE TREATMENT PLANT
(VARIOUS CONTROL SYSTEMS),
SOUTHERN ITALY**

Start Year:	2019
Location	Southern Italy
Industry	Waste Treatment
Technology	Legacy ORSI AUTOMAZIONE systems
Services	Maintenance, Technical Support services



Maintenance and Technical support services focused to stabilize the application and implement the proper corrective actions to remove existing problems on the ORSI OpenPMC systems (with SIEMENS ET200M modules) as well as the related ORSI CUBE/SIMATIC IT supervisory system. Periodic inspections and maintenance activities.

**POWER PLANT
(GAS/STEAM TURBINES AND BOP CONTROL SYSTEMS),
SOUTHERN GREECE**

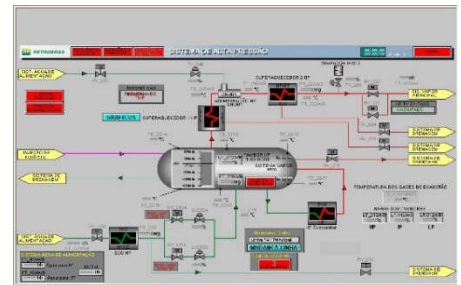
Start Year:	2019
Location	Southern Greece
Industry	Energy
Technology	GE MARK VI (migration from Legacy ORSI AUTOMAZIONE systems)
Services	Engineering, Project documentation, Technical Support services



Engineering services focused on the architecture, logics, libraries and HMI analysis of the existing ORSI OpenPMC control system (with SIEMENS ET200M I/O modules, SIMOCODE controls, third parties interfaces etc....) as well as ORSI CUBE/SIMATIC IT supervisory system and specific technical support on the reverse engineering phase of the migration project to GE MARK VI.

**POWER PLANT
(GAS/STEAM TURBINES AND BOP CONTROL SYSTEMS),
SOUTHWEST BRAZIL**

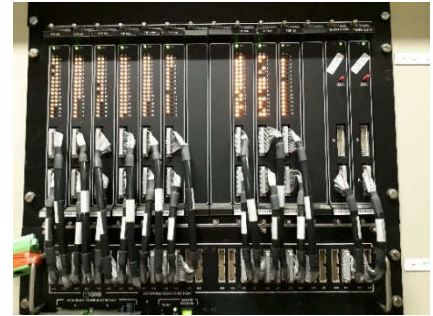
Start Year:	2018
Location	Southwest Brazil
Industry	Energy
Technology	GE MARK VI (migration from Legacy ORSI AUTOMAZIONE systems)
Services	Engineering, Project documentation, Technical Support services



Engineering services focused on the architecture, logics, libraries and HMI analysis of the existing ORSI OpenPMC control system (with SIEMENS ET200M I/O modules, third parties interfaces etc....) as well as ORSI CUBE supervisory system and specific technical support on the reverse engineering phase of the migration project to GE MARK VI.

**WASTE TREATMENT PLANTS
(CONTROL SYSTEMS),
SOUTHERN ITALY**

Start Year:	2017 ... in progress
Location	Southern Italy
Industry	Waste treatment
Technology	Legacy ORSI AUTOMAZIONE systems
Services	Engineering, Technical Support services



Engineering and Technical support services focused to establish a proper maintenance plan as well as a disaster & recovery procedure on the existing ORSI Series 20 system (with ORSI I/O modules) as well as the related ORSI CUBE supervisory system. Periodic inspections and maintenance activities.

**RUBBER & TIRES PLANT
(CONTROL SYSTEMS),
NORTHERN ITALY**

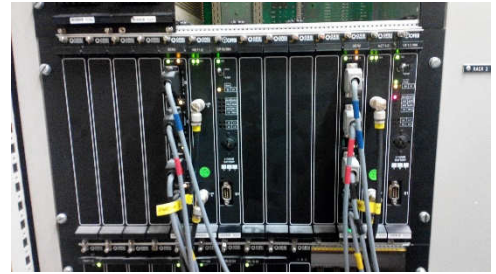
Start Year:	2017-2021
Location	Northern Italy
Industry	Rubber
Technology	Legacy ORSI AUTOMAZIONE systems
Services	Engineering, Technical Support services



Engineering and Technical support services focused to establish a proper maintenance plan as well as a disaster & recovery procedure on the existing ORSI Series 10 and Series 15 control systems (with ORSI I/O modules) as well as the related ORSI CUBE supervisory system (v2.xx, 3.xx) installed in two facilities. Periodic inspections, maintenance activities and Parts & repairs for various existing legacy control systems

**SUGAR REFINERY
(CONTROL SYSTEMS),
LONDON AREA, UNITED KINGDOM**

Start Year: 2011-2021
 Location: London area, UK
 Industry: Food & Beverages
 Technology: Legacy ORSI AUTOMAZIONE systems
 Services: Technical support services



Technical support services for ORSI DCS, SCADA and MES legacy systems as well as consulting and engineering services to maintain, improve the existing legacy applications and explore the possible migration scenarios.

**ENERGY FROM WASTE PLANT
(CONTROL SYSTEMS MIGRATION),
NORTHERN ITALY**

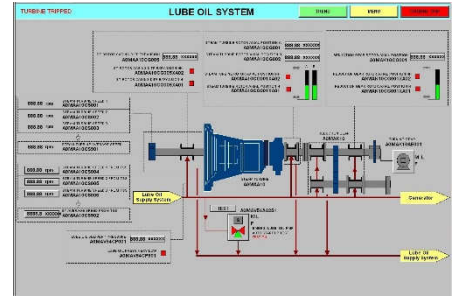
Start Year: 2010
 Location: Northern Italy
 Industry: Energy
 Technology: SPPA-T3000
 (migration from Legacy ORSI AUTOMAZIONE systems)
 Services: Engineering, Power-up, Commissioning



Engineering services for the DCS/PLC layer for a conversion from an ORSI DCS legacy (PMC Series 15/386) to SIEMENS SPPA T3000 using S7400 and ET200M technology) and provided the necessary assistance for the power-up and start-up stages of the project. The major challenge of this project was to design the new DCS system around the old one, keeping the existing cabinets (to avoid complications with the existing I/O wiring and to minimize the commissioning period) and to replace the existing DCS within three weeks from the plant shutdown.

ENERGY FROM WASTE PLANT (STEAM TURBINE CONTROL SYSTEMS), LONDON AREA, UNITED KINGDOM

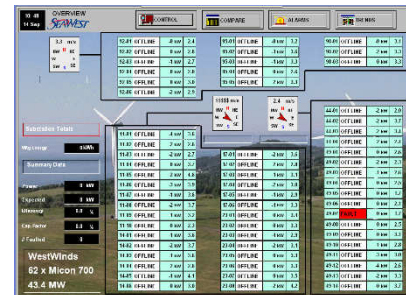
Start Year: 2009
 Location: London area, UK
 Industry: Energy
 Technology: Legacy ORSI AUTOMAZIONE systems
 Services: Engineering, Power-up, Commissioning services



Engineering services for a Steam turbine Control system based on ORSI OpenPMC and SIEMENS ET200M technology. Provided the necessary assistance for the power-up, loop-check and commissioning stages of the project.

WIND FARM (DATA MONITORING SYSTEMS), VARIOUS LOCATIONS, USA

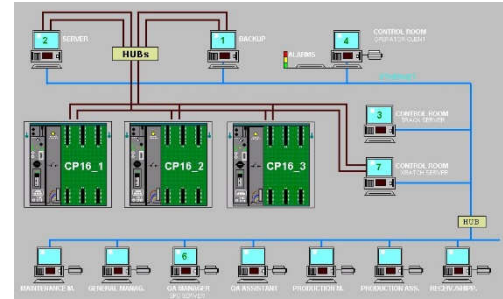
Start Year: 2008
 Location: Various locations, USA
 Industry: Energy
 Technology: Legacy ORSI AUTOMAZIONE systems
 Services: Engineering, Technical support services



Engineering services for various wind farm data monitoring & reporting projects based on SIEMENS SIMATIC IT technology and provided the necessary support services for the day by day operations.

**EO STERILIZATION PLANT
(MES & CONTROL SYSTEMS MIGRATION),
VARIOUS LOCATIONS, USA**

Start Year: 2008-2012
 Location: Various locations, USA
 Industry: Chemical, Medical devices
 Technology: CONTROL-LOGIX
 (migration from Legacy ORSI AUTOMAZIONE systems)
 Services: Commissioning coordination, Engineering, Post-Commissioning support



Engineering services for the DCS/PLC layer for a conversion from an ORSI DCS legacy (PMC CP16 and Allen Bradley I/O) and ORSI SCADA/MES (Cube, XBatch, Track) to a more recent technology (based on Rockwell Automation products) and provided the necessary assistance for the power-up and start-up stages of the projects (four locations within USA). The major challenge of this project was to apply a step by step approach to the conversion process keeping the plant in production and convert one piece/ area at the time then move to the next one, considering all the challenges due to an FDA regulated environment.

**CHEMICAL PLANT
(MES & CONTROL SYSTEMS),
VARIOUS LOCATIONS, USA/MEXICO**

Start Year: 2008-2009
 Location: Various locations, USA/MEXICO
 Industry: Chemical
 Technology: Legacy ORSI AUTOMAZIONE systems
 Services: Engineering, Technical support services



Engineering services for various chemical plant projects based on SIEMENS SIMATIC IT technology (SCADA and MES) and provided the necessary support services for application changes, products updates and hands-on training.

For your project needs please contact:

Pietro Paci
General Manager
pietro.paci@jpe-services.com